



[www.andreaceramic.com](http://www.andreaceramic.com)

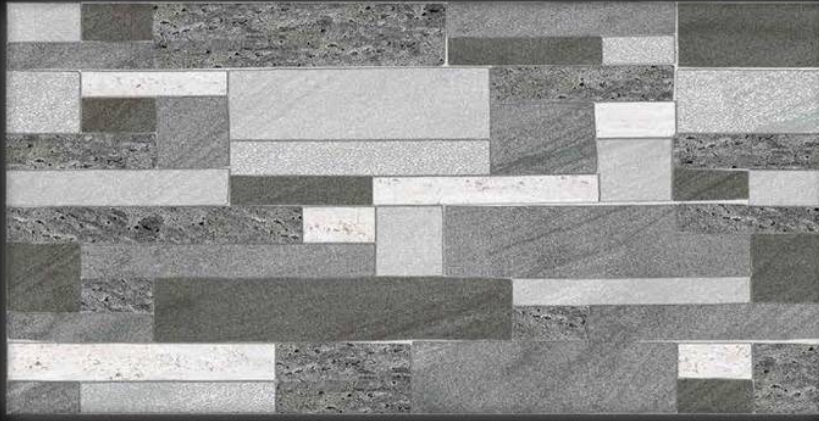


**Andrea**  
*We Garnish The Architect*

Bansiyi Overseas LLP

---

# 12X24 GLOSSY



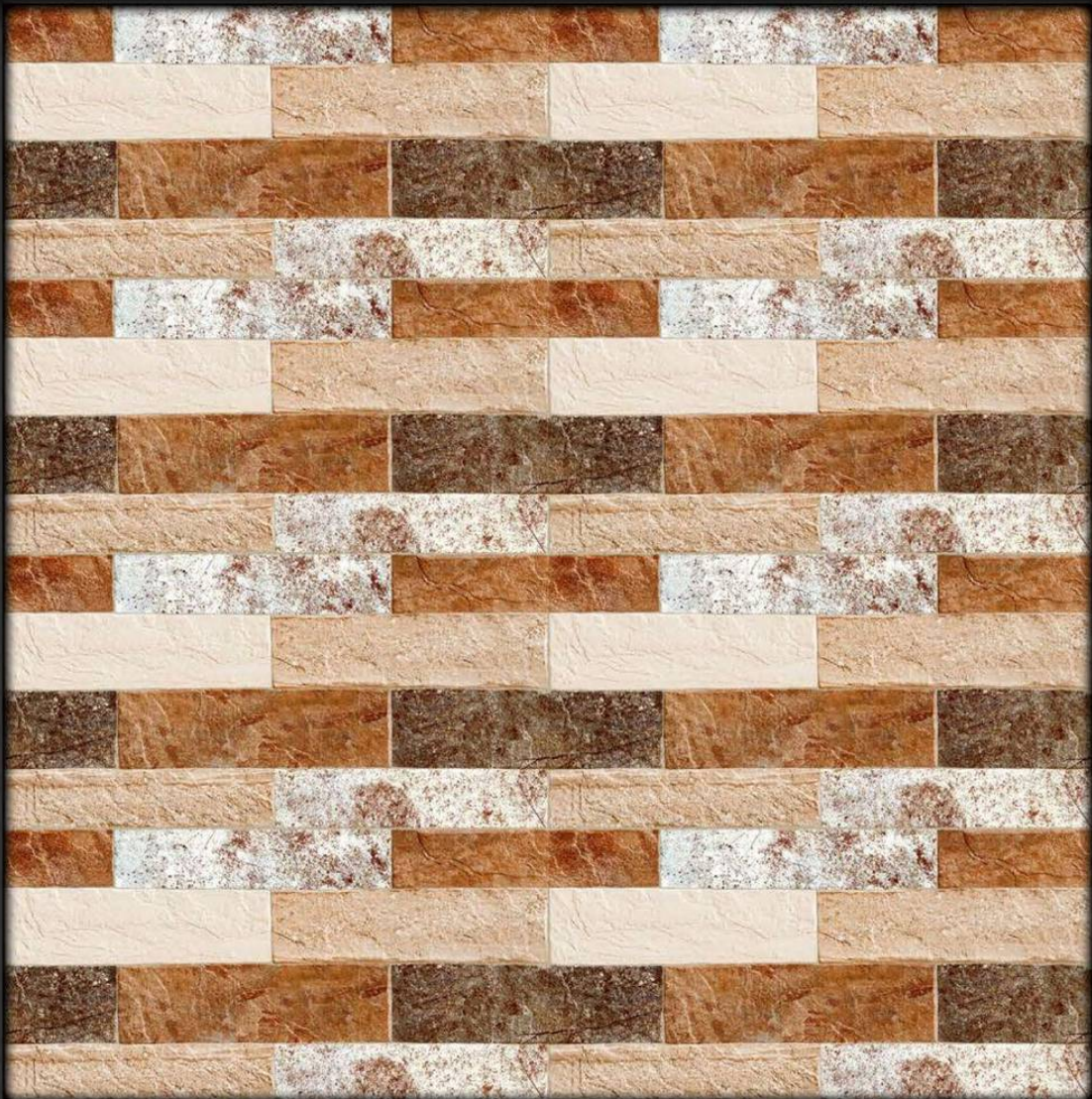
EL-GL-001



12X24 GLOSSY



EL-GL-002



12X24 GLOSSY



EL-GL-003



12X24 GLOSSY



EL-GL-004



12X24 GLOSSY



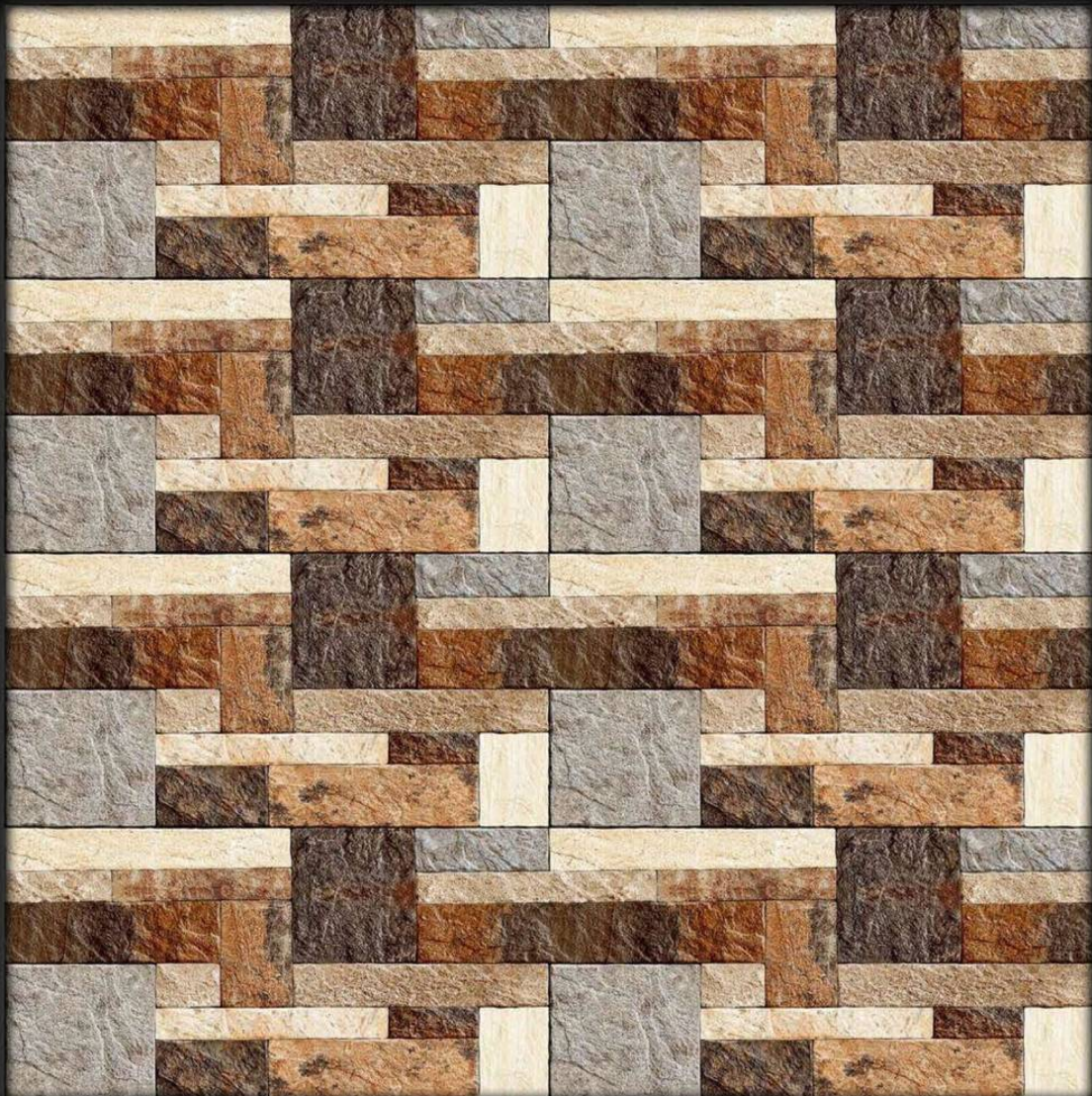
EL-GL-005



12X24 GLOSSY



EL-GL-006



12X24 GLOSSY



EL-GL-007

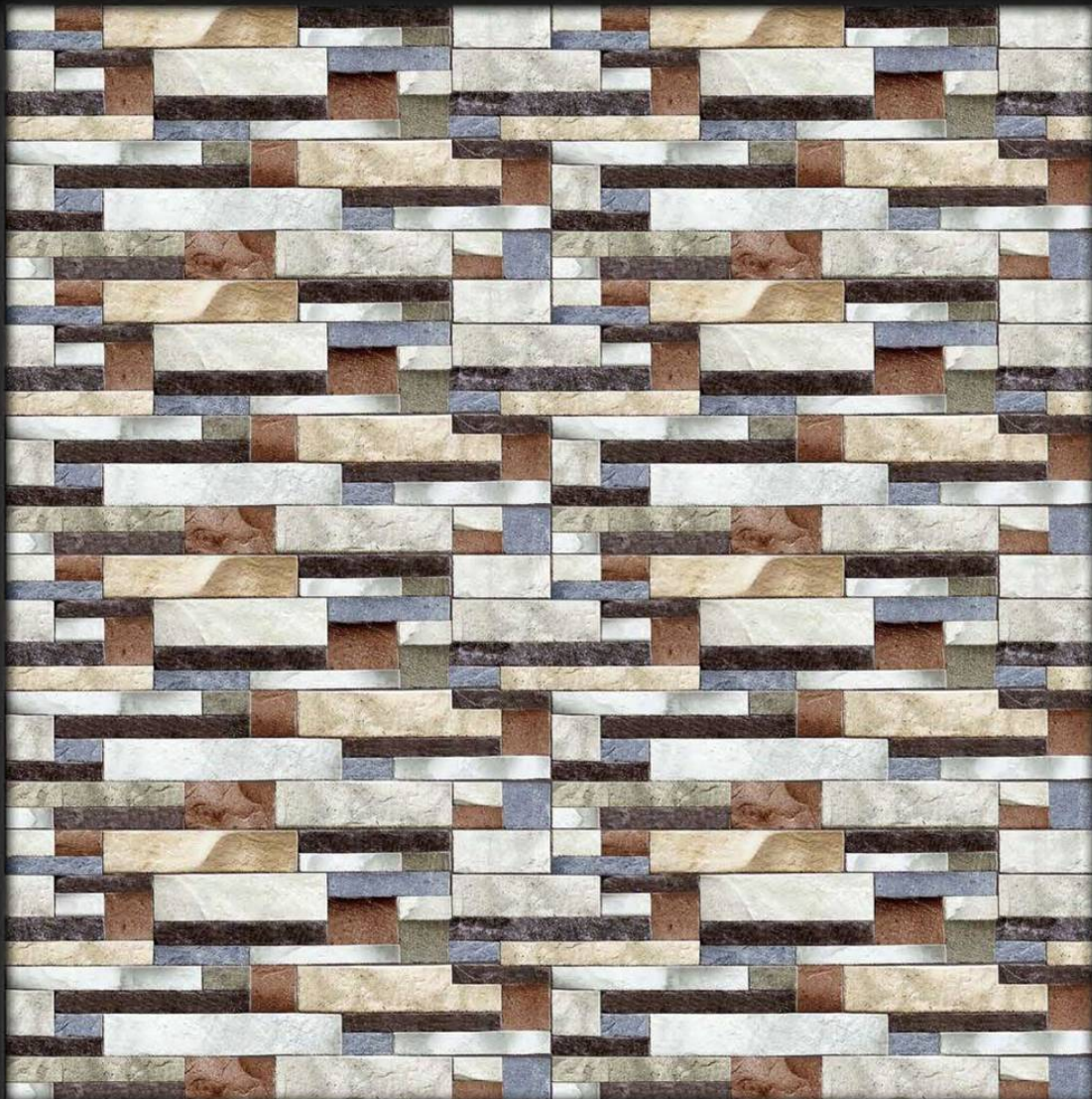




12X24 GLOSSY



EL-GL-008



12X24 GLOSSY



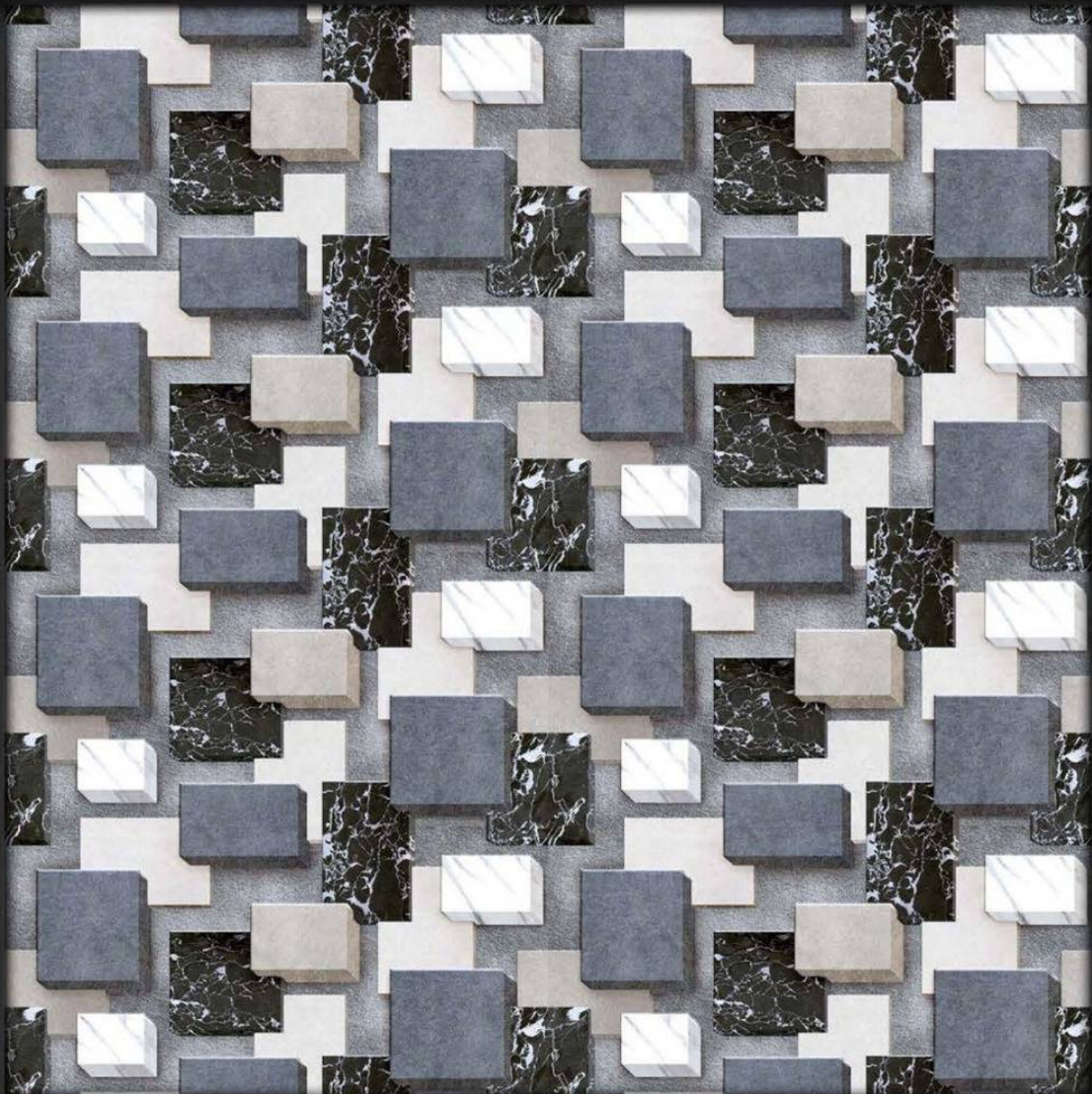
EL-GL-009



12X24 GLOSSY



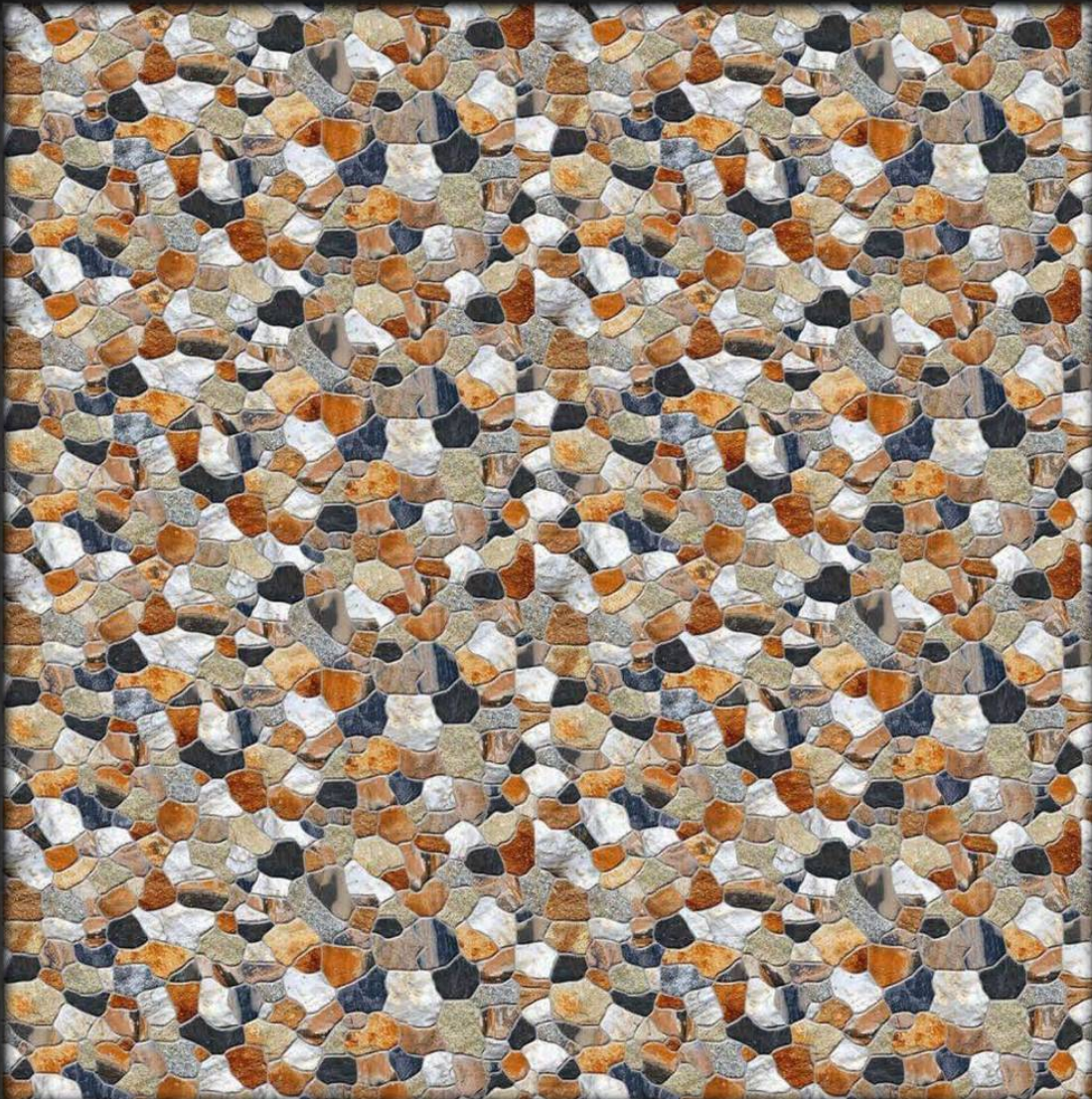
EL-GL-010



12X24 GLOSSY



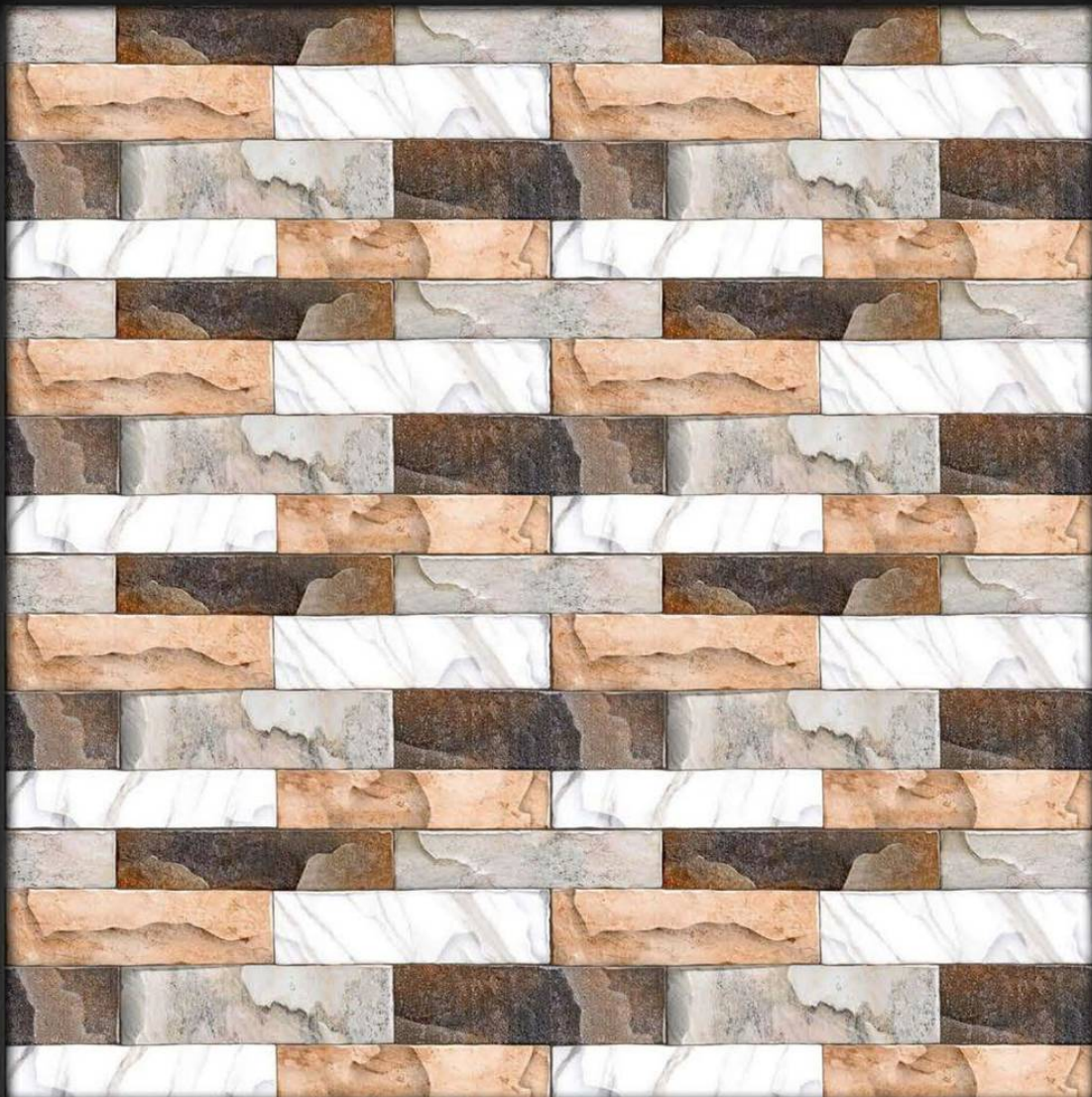
EL-GL-011



12X24 GLOSSY



EL-GL-012



12X24 GLOSSY



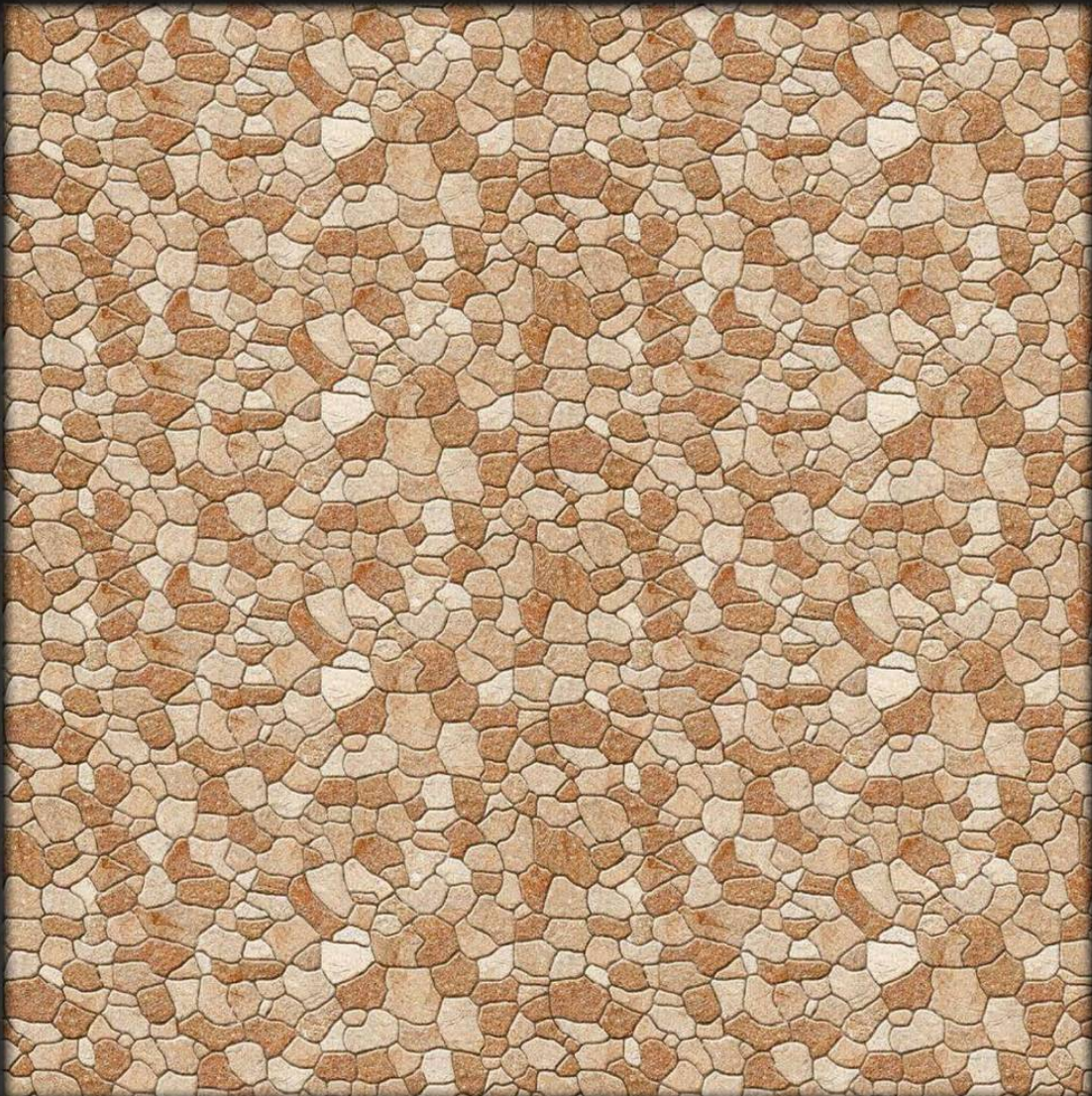
EL-GL-013



12X24 GLOSSY



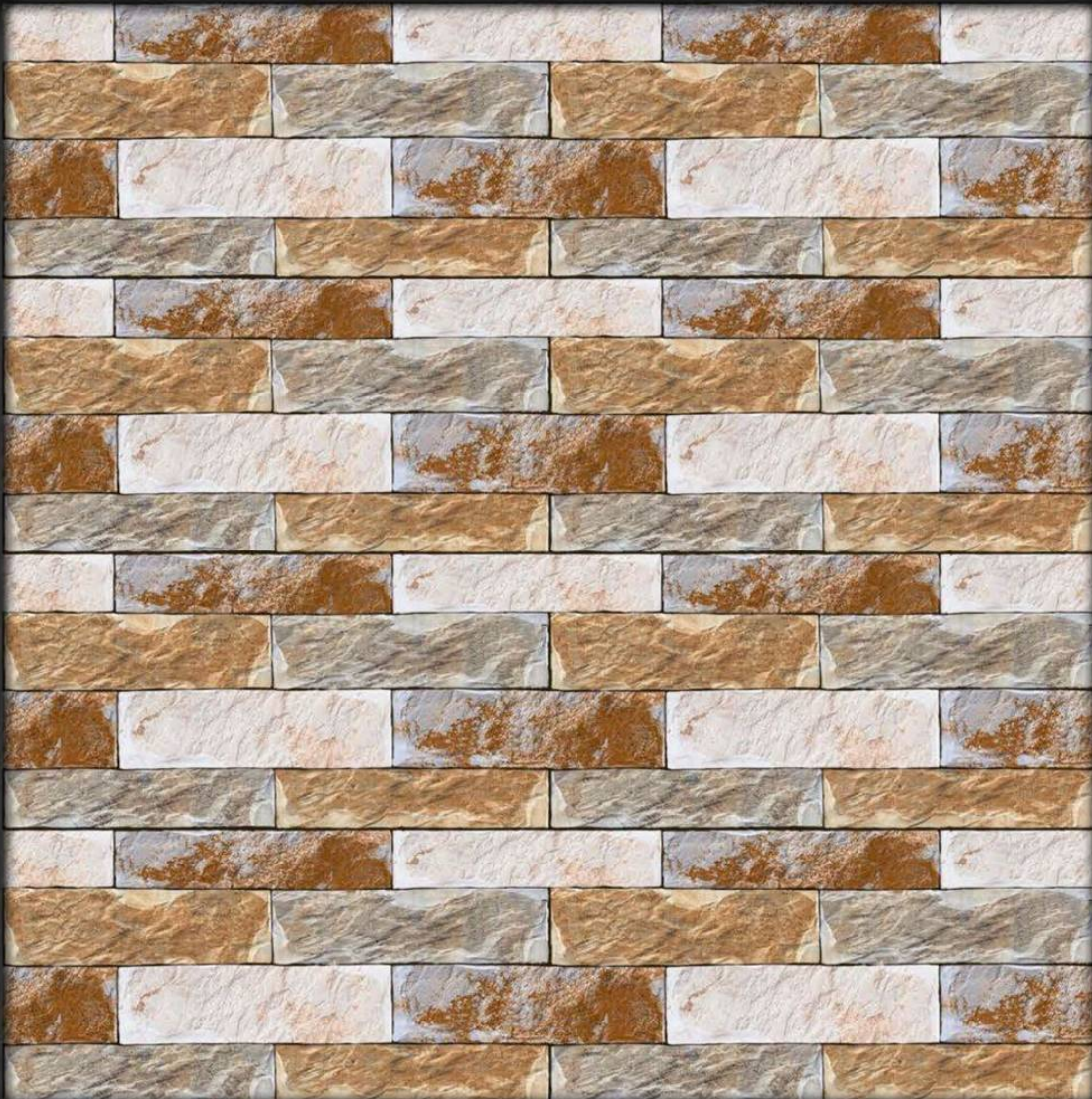
EL-GL-014



12X24 GLOSSY



EL-GL-015

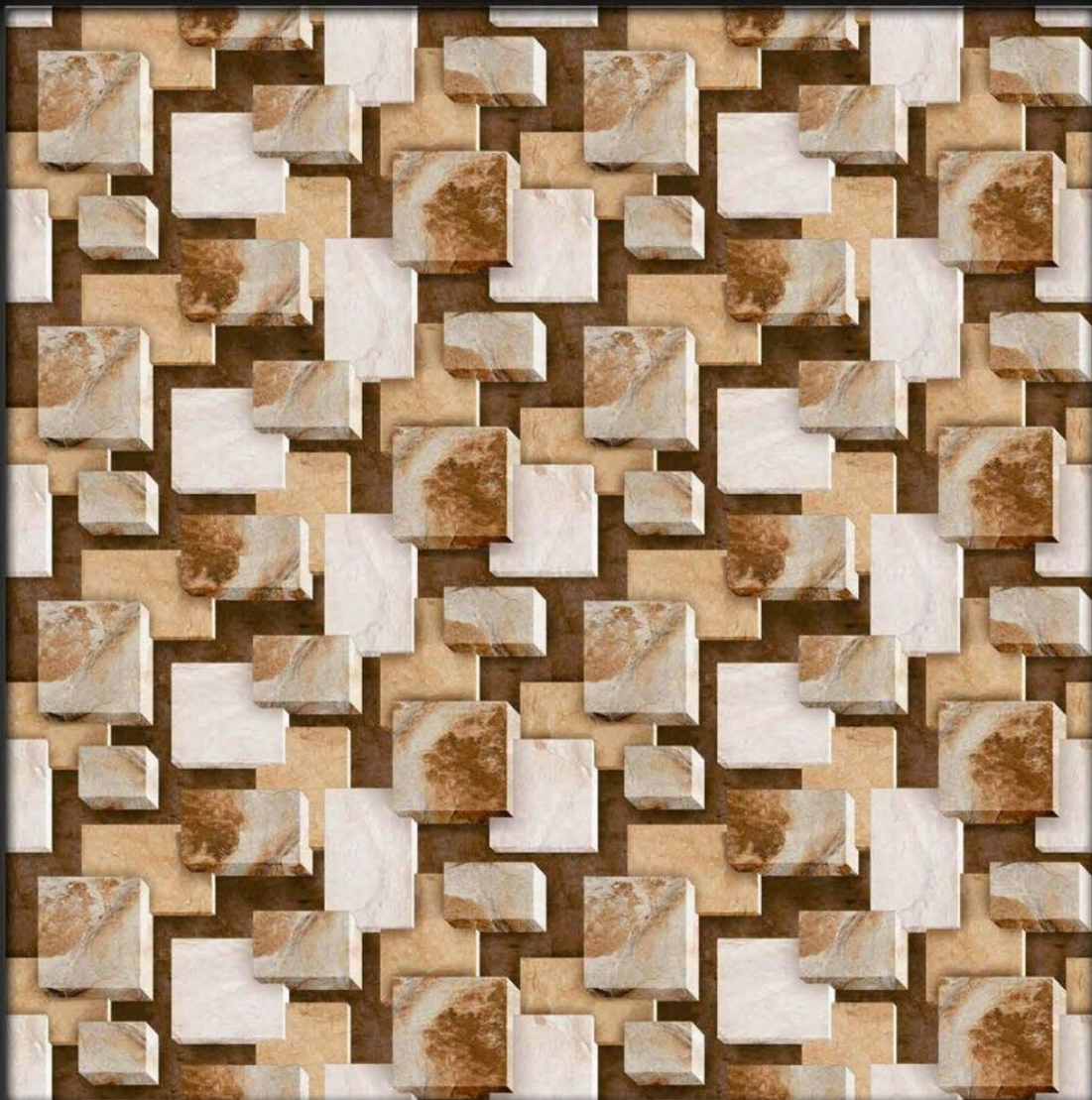




12X24 GLOSSY



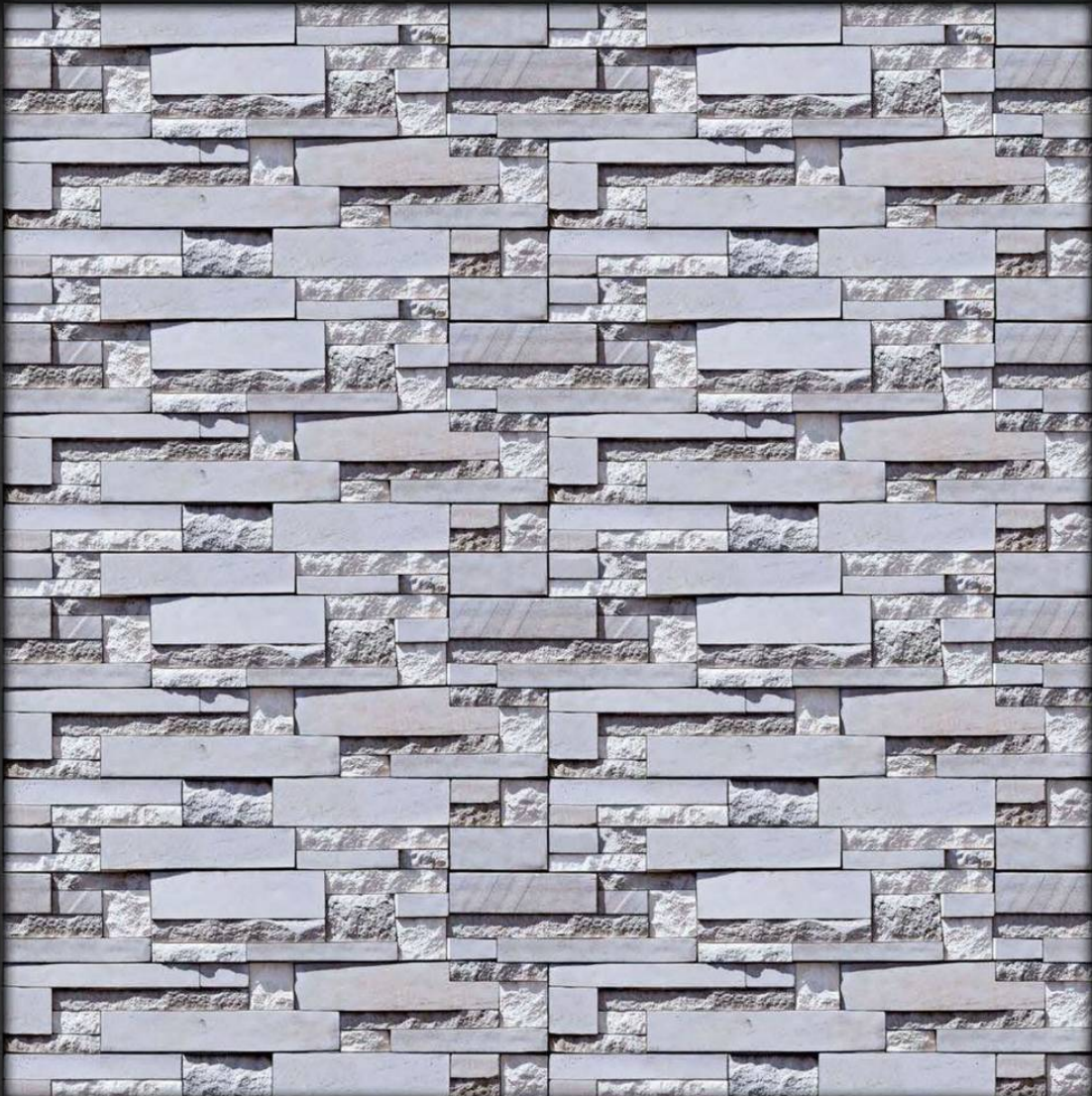
EL-GL-016



12X24 GLOSSY



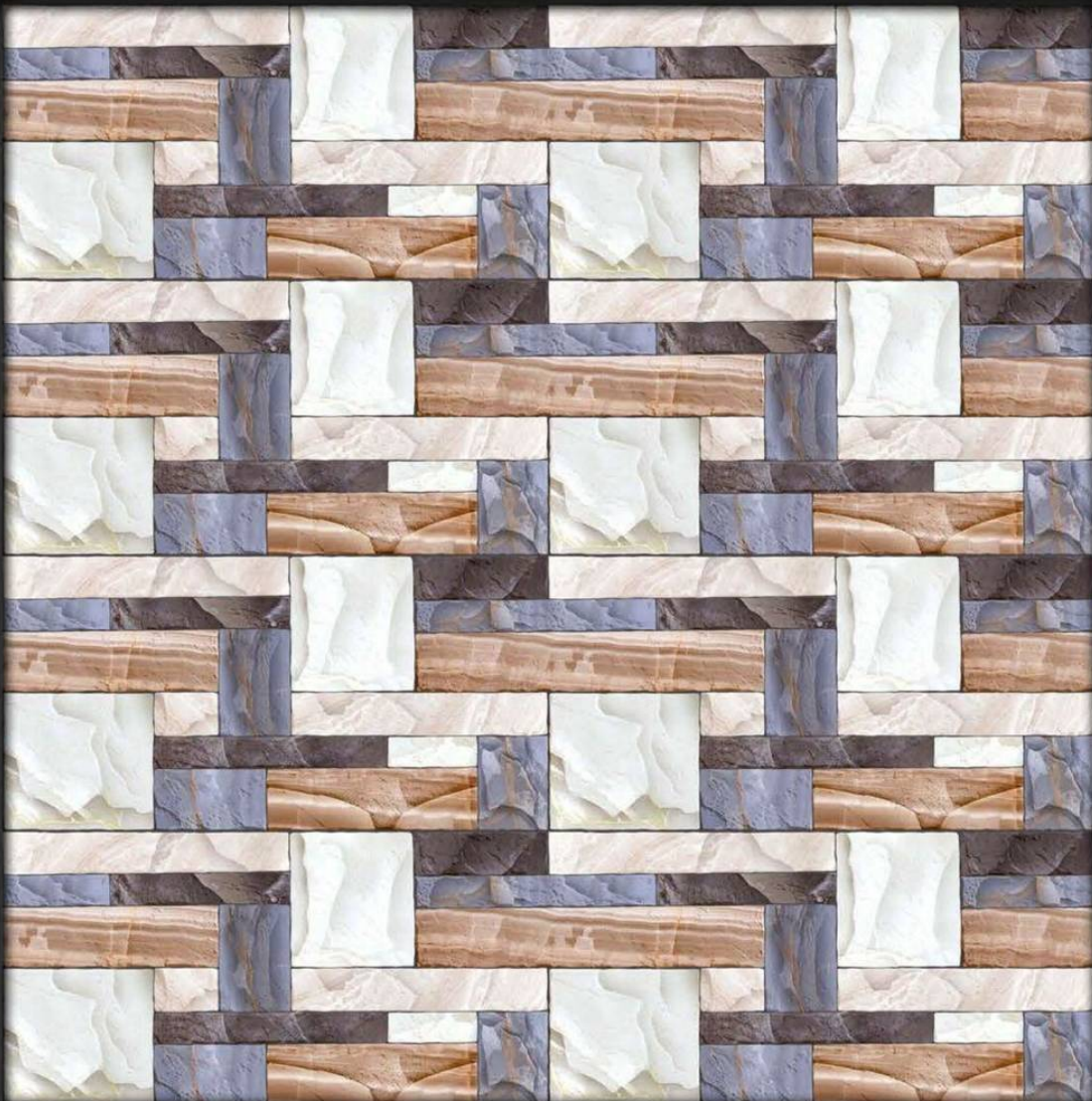
EL-GL-017



12X24 GLOSSY



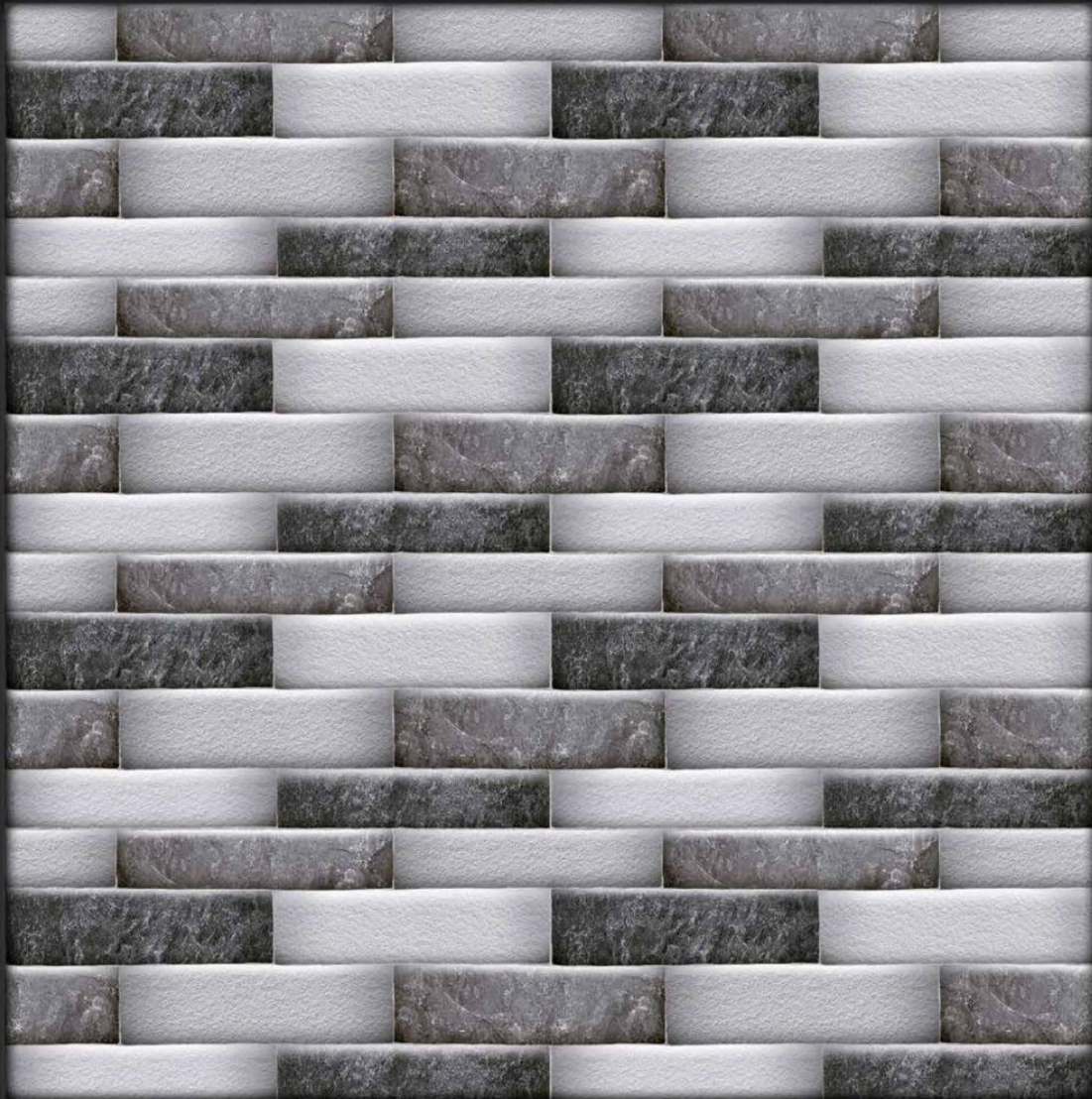
EL-GL-018



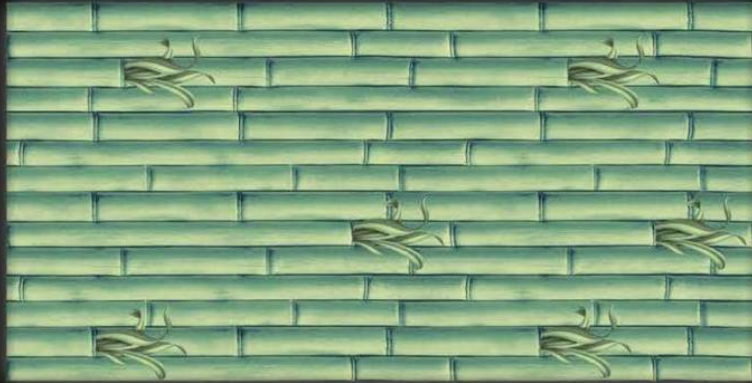
12X24 GLOSSY



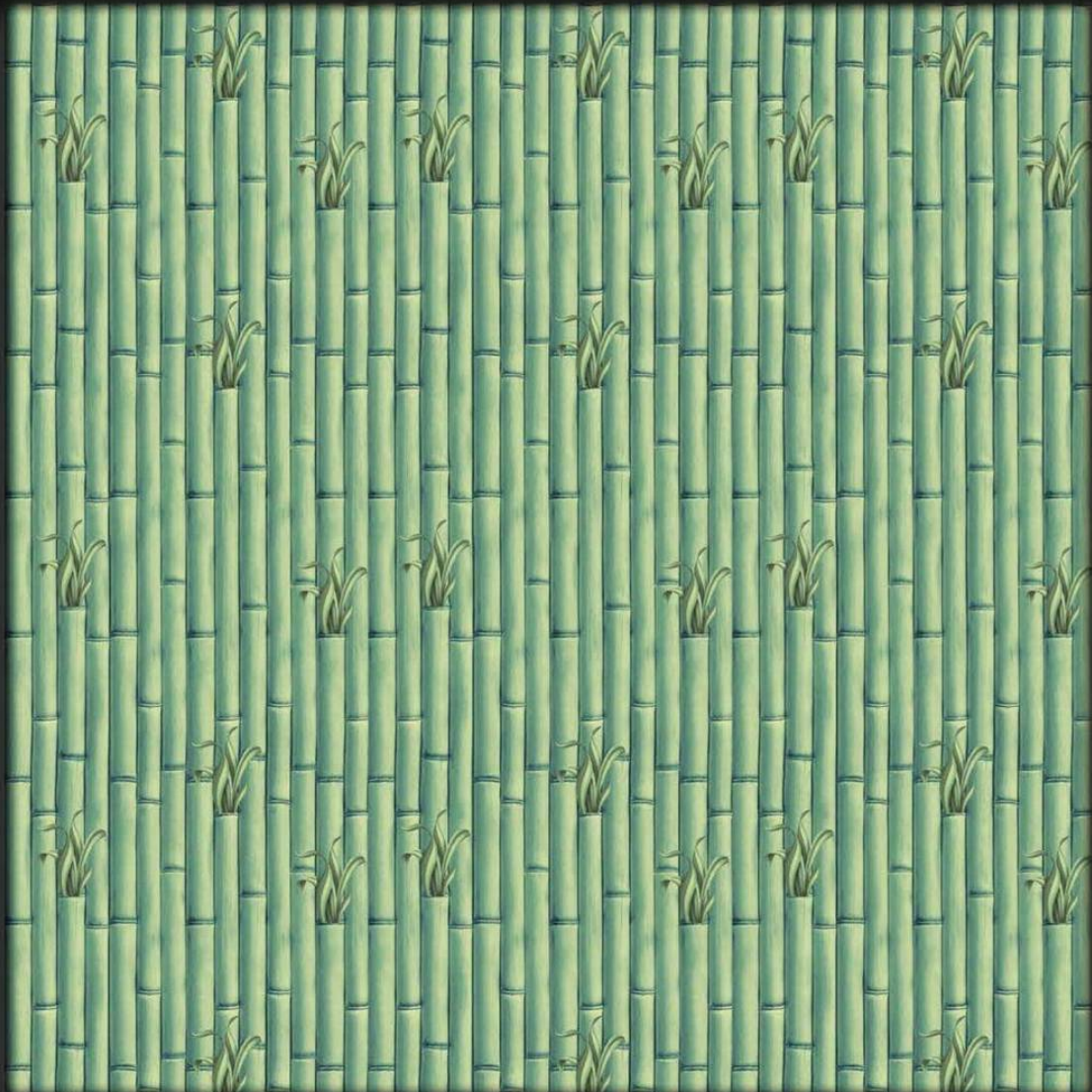
EL-GL-019



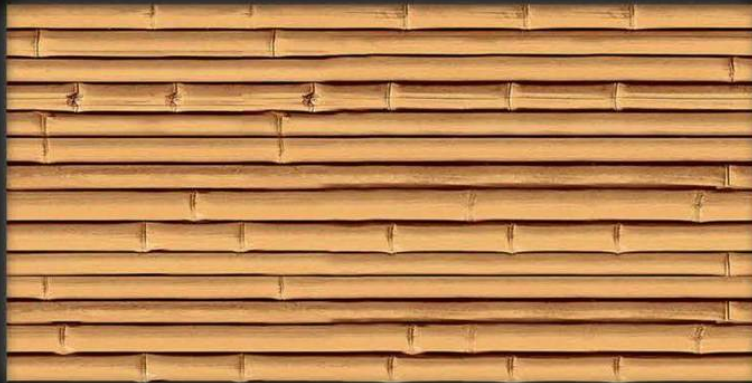
12X24 GLOSSY



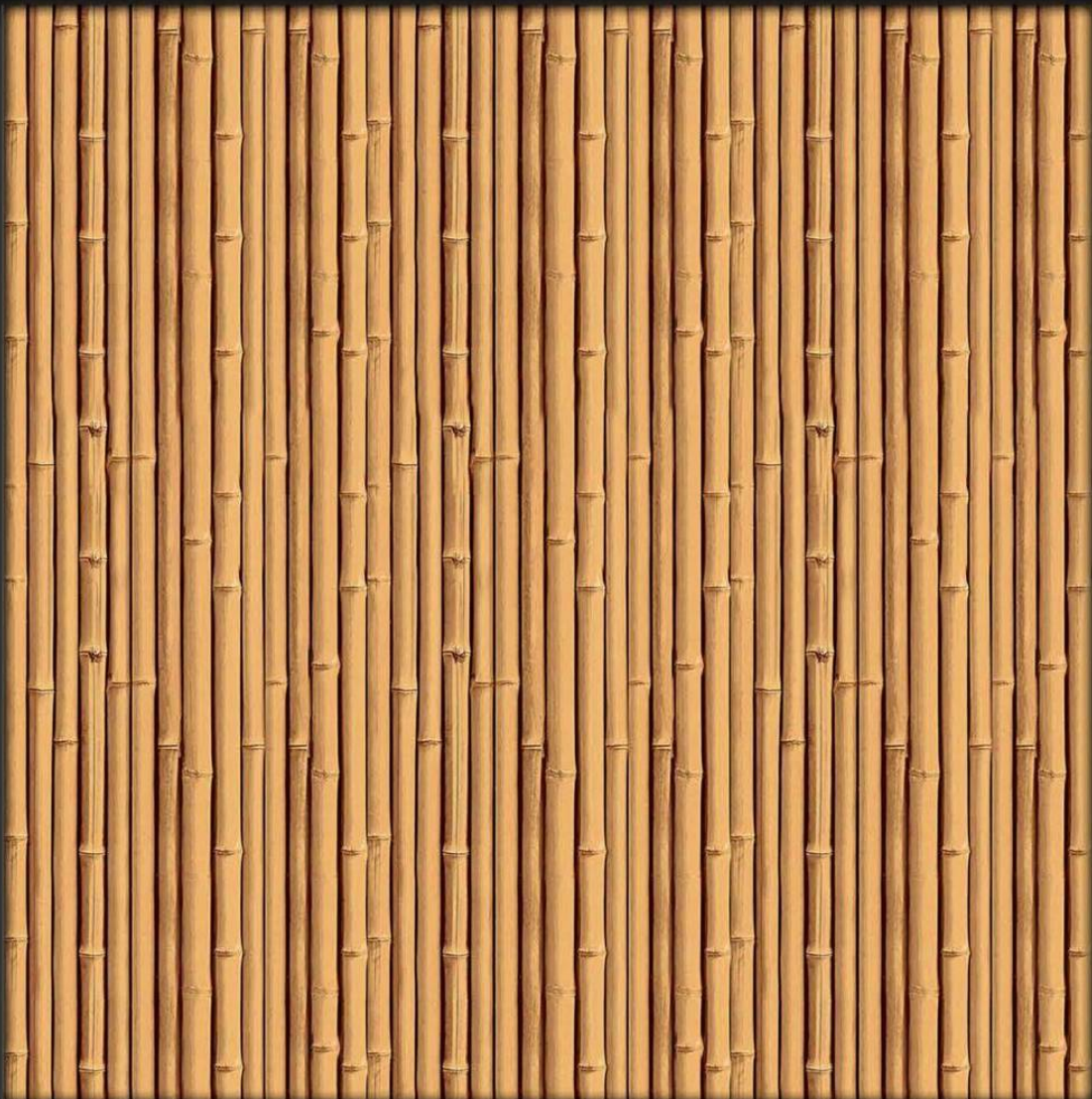
EL-GL-020



12X24 GLOSSY



EL-GL-02 1



12X24 GLOSSY



EL-GL-022



12X24 GLOSSY

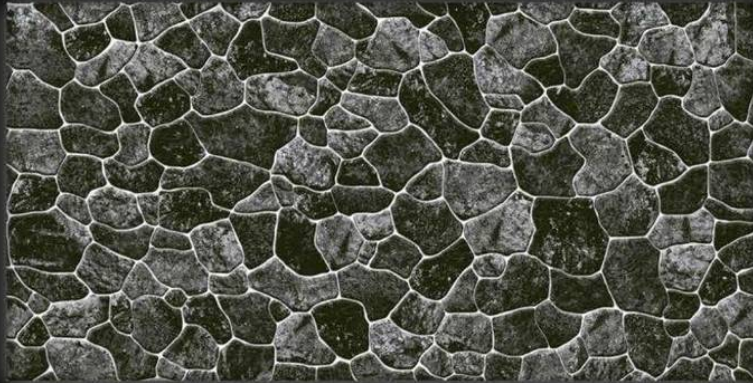


EL-GL-024

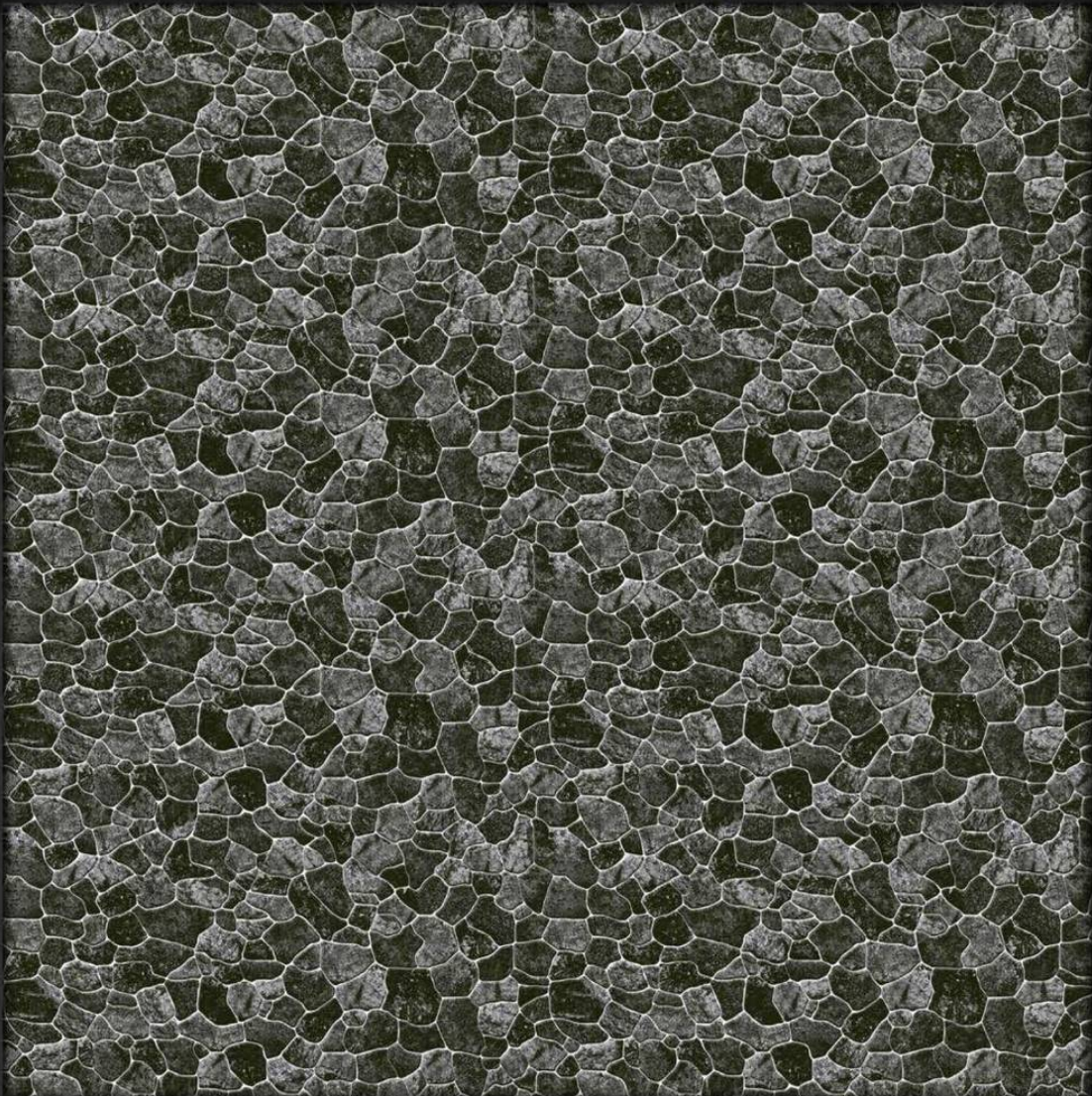




12X24 GLOSSY



EL-GL-025



12X24 GLOSSY



EL-GL-023





# Andrea

We Garnish The Architect



223 - Pacific business park,  
8A Kandla National Highway,  
Mr.The Fern Residency Hotel,  
Morbi -2(363642), Gujarat



[Info@andreaceramic.com](mailto:Info@andreaceramic.com)



+91 97129 89419  
+91 93138 04970

[www.andreaceramic.com](http://www.andreaceramic.com)